



Kaya J.N.E. Craane, Terramar 7, Kralendijk

US\$ 695,100 Asking price, including inventory

Buyers Costs

Kralendijk - 1,367 / 127 sq.ft./m2 - 2 Bedrooms - 2.5 Baths

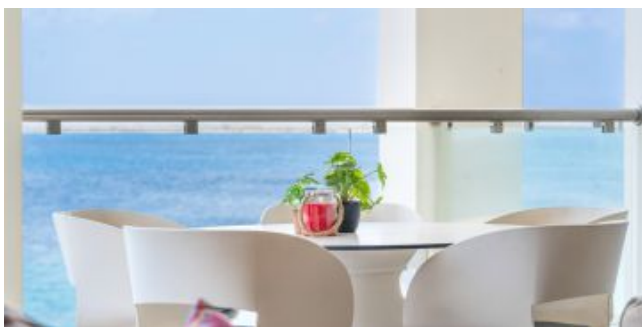
Real Estate information

Neighborhood	Kralendijk
Address	Kaya J.N.E. Craane, Terramar 7
Long Lease Land	
Bedrooms	2
Bathrooms	2.5
Sea view	
Holiday Rentals allowed	
Parking	
Air Conditioning in bedrooms	
Total living area	1,367 / 127 sq.ft./m2
Construction date	2016
Maintenance status	Good



Ground tax (annually): 0.345% of the value (1st residence), or Property tax (annually): 0.91% of the value (2nd residence). Buyers Costs consist of (one-off): 5% transfer tax, approx. 1,5% notary costs and costs of Land Registry at the office of Kadaster depending on purchase price.

Terramar is built partly on freehold land and partly on longlease land. The longlease fee for this apartment is USD 273 per year. Registered with the Land Registration office (Kadaster) with number 4-D-3289A19.



Features

Looking for a luxurious and modern feel, combined with panoramic views of the Caribbean Sea? Located in a lively location on the boulevard, within walking distance of shops and restaurants? It sounds too good to be true, but you'll find it all at Terramar 7! This magnificent apartment is located on the second floor of the beautifully designed building, which forms a landmark on Bonaire, with respect for its cultural heritage. Terramar 7 has a very spacious terrace over the entire width of the apartment, which offers views over the bay of Kralendijk, Klein Bonaire and the Caribbean Sea. Start your day with a delicious breakfast on your private terrace, as you watch the pelicans catch fish or enjoy a brilliant sunset at the end of a glorious day on the island.

Open, bright and modern are the main characteristics of the apartment, which will immediately stand out as soon as you enter the apartment. The pleasant ambience makes you feel right at home and guarantees a wonderfully relaxing stay on Bonaire in your own apartment. If desired, you can rent out the apartment during periods when you are not staying there yourself, you can rent it out for short-term or long-term. In short, Terramar 7 is an apartment with many possibilities and a view that never gets old.

- Located in the center of Kralendijk,
- High end appliances and finishing,
- On site parking,
- Dive gear rinsetank on site,
- Ceramic floor tiles in condo and porch,
- Aluminium and wooden windowframes partially fitted with wooden shutters and partially with glass.

This condo is subject to a Home Owners Association (HOA). HOA fee: US\$ 600 per month. (incl. insurance, tv and internet, electricity for common areas and the maintenance and cleaning of common areas). Please contact us in case you wish to receive further information about this HOA.



Lay out

Covered staircase or elevator leading to entrance, hallway into living room with French doors to wide covered porch, open kitchen, dining area with French doors to balcony on the side of the apartment, bedroom with corner balcony at the rear and private bathroom, bedroom 2 with private bathroom, guesttoilet and storage/laundry room.

Technical specifications

- 220 Volt,
- Air conditioning in bedrooms,
- Built-in ceiling lights in bedrooms & living room,
- Ceiling fan in living room,
- 12-person elevator.

Living area is based on net indoor space plus covered outdoor space.

Zoning plan

Extract from Ruimtelijk Ontwikkelingsplan Bonaire (zoning plan)

Link to zoning plan map with marker: [Map](#)

Link to zoning description: [Zoning "Centrum"](#)

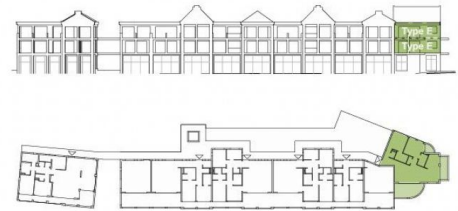
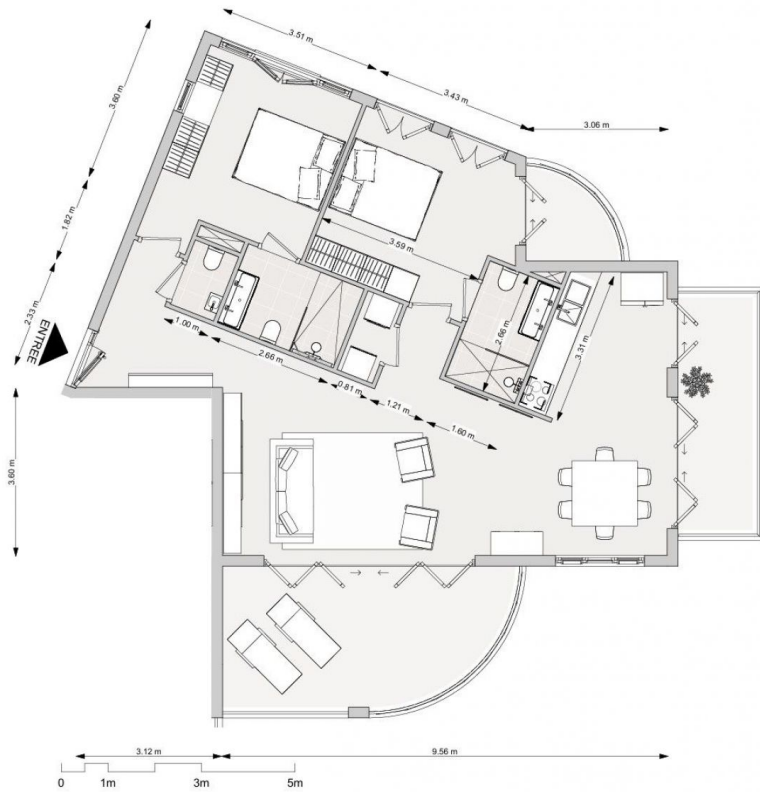












Type E binnenuimte	93.4 m ²
Type E buitenruimte	34.4 m ²
	<hr/>
	127.8 m ²

Type E
TERRAMAR