



## **Seru Blenchi 59, Seru Blenchi**

**US\$ 510,500 Fixed price**

Exempt from transfer tax — only 1.5% buyer's costs

Seru Blenchi - 1,679 / 156 sq.ft./m2 - 4 Bedrooms - 2.5 Baths

## Real Estate information

Neighborhood	Seru Blenchi
Address	Seru Blenchi 59
Freehold Land	
Bedrooms	4
Bathrooms	2.5
New construction	
Air Conditioning in bedrooms	
Total living area	1,679 / 156 sq.ft./m2
Total ground area	5,856 / 544 sq.ft./m2
Maintenance status	New Construction



Ground tax (annually): 0.345% of the value (1st residence), or Property tax (annually): 0.91% of the value (2nd residence).



## Features

Seru Blenchi, a new development by [Roosdom Tjihuis Bonaire](#), where rural charm, modern comfort, and the rich history of Bonaire come together. Nestled in a gently rolling, green, and historic setting, Seru Blenchi offers a serene living environment that perfectly reflects the island's peaceful and unspoiled character. A good life, beautifully local. Seru Blenchi is located right next to the highly sought-after neighborhoods of Bona Bista and Pure36.

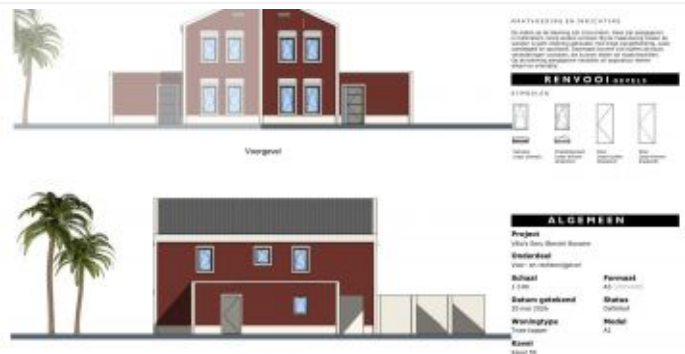
The homes are being built in phases, using high-quality local and European materials, carefully selected for the Caribbean climate. Each residence has been passionately and proudly designed by [EVE architects](#).

Home number 59 is a spacious semi-detached home with plenty of living space. With four comfortable bedrooms, it is ideal for families, remote workers, or hosting relatives and friends. Three bedrooms come standard with air conditioning, with the option to extend this to the fourth bedroom and the living room for optimal comfort. You also have the opportunity to choose materials and finishes, three interior concepts have been created: Beach look, Long Island Wood look and Cosmopolitan look. Additionally, all optional upgrades are available, such as a carport, external storage room, or swimming pool, allowing the home to be fully customized to your preferences.

The home is delivered complete with a modern kitchen, stylish bathrooms, technical installations including hot water supply, WEB certification (water/electricity), and fully finished floors and walls. Inside, the walls are smoothly plastered and painted, so you can move in right away.

The garden is leveled and fully fenced, leaving plenty of room for you to shape the landscaping to your own taste and style. Optionally, a complete furnishing package is available through Wire Interiors Bonaire for a full turnkey experience. Curious about this package? Have a first look at the [online mood board](#).

Including a share in the joint access road.



## Technical specifications

- Construction method: solid prefab aerated concrete structure, suited to the Caribbean climate; extensions such as storage and carport/garage in concrete block.
- Roofing: pitched roofs with durable corrugated sheets in roof-tile profile (anthracite grey) and flat roofs with high-quality roofing.
- Floors: cement screed in a modern grey tone on the ground floor, ceramic tiles on the upper floor, and a finished concrete floor in the storage room.
- Facades: smoothly plastered and painted in carefully selected natural colors, harmonizing with the Bonairean surroundings.
- Frames and doors: aluminum profiles, powder-coated in grey tones, fitted with sun-reflective glass and insect screens on tilt-and-turn windows.
- Interiorconcept: choice of three concepts: Beach look, Long Island Wood look and Cosmopolitan look.
- Garden and fencing: garden leveled and fully enclosed with a traditional Bonairean wall at the front and natural fencing along the sides.

### Disclaimer:

- a. This project is still under development. The information and images (including the site plan) are indicative and no rights can be derived from them.
- b. The living area measurement is based on the net indoor space plus covered outdoor areas, such as, where applicable, a veranda, covered terrace, or external storage room. Not included are a wooden iroko carport and/or an uncovered sun terrace around the pool.

## Zoning details

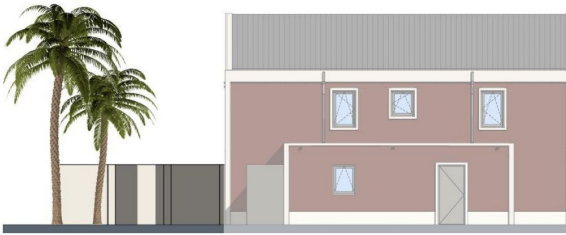
This villa is designated for residential use. Within the home, you are allowed to practice a profession or run a small business, provided this remains subordinate to the primary residential function. A maximum of 30% of the home or 50 m<sup>2</sup> (whichever is less) may be used for this purpose.

Rental is permitted, provided the rental period is longer than 3 months.

- Link to zoning map with marking: [Zoning map](#)
- Link to zoning description: Designation "[Residential I](#)" (only available in Dutch)



Achtergevel



Linkerzijgevel

## LEGENDA

### IMPRESSIES

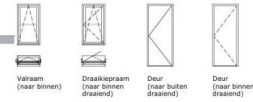
De tekeningen en afbeeldingen geven een impressie van het ontwerp. De werkelijke uitvoering en kleuren van gevels, kozijnen, schilderen, dakbedekkingen etc. kunnen afwijken. Aan deze tekeningen kunnen, ondanks alle zorgvuldigheid die is nagestreefd, geen rechten worden ontleend.

### MAATVOERING EN INRICHTING

De maten op de tekening zijn circa-maten. Deze zijn aangegeven in millimeters, tenzij anders vermeld. Bij de maatvoering tussen de wanden is geen rekening gehouden met enige wandafwerking, zoals wandtegels en spuitwerk. Daarnaast kunnen zich tijdens de bouw veranderingen voordoen, die kunnen leiden tot maatverschillen. Op de tekening aangegeven meubilair en apparatuur dienen alleen ter oriëntatie.

## RENOVOOI GEVELS

### SYMBOLEN



## ALGEMEEN

### Project

Villa's Seru Blenchi Bonaire

### Onderdeel

Achter- en linkerzijgevel

### Schaal

1:100

### Datum getekend

20 mei 2026

### Woningtype

Twee kapper

### Kavel

Kavel 59

### Formaat

A3 (297x420)

### Status

Definitief

### Model

A2



## LEGENDA

### MAATVOERING EN INRICHTING

De maten op de tekening zijn circa-maten. Deze zijn aangegeven in millimeters, tenzij anders vermeld. Bij de maatvoering tussen de wanden is geen rekening gehouden met enige wandafwerking, zoals wandtegels en spuitwerk. Daarnaast kunnen zich tijdens de bouw veranderingen voordoen, die kunnen leiden tot maatverschillen. Op de tekening aangegeven meubilair en apparatuur dienen alleen ter oriëntatie.

## RENOVOOI PLATTEGRONDEN

### SYMBOLEN

  Meterkast  
  Buitenkraan  
  Hwa Hemelewaterafvoer  
  Buiten unit airco  
  Ruimte v.z.v. koeling d.m.v. airco

### ELEKTRA

⊕ : plafondlamp  
⊕ : wandlamp  
⊕ : wandlamp met timer  
⊕ : schakelaar  
⊕ : wisselschakelaar  
⊕ : seriegeschakelaar  
⊕ : plafondventilator  
⊕ : enkele wandcontactdoos geard  
⊕ : dubbele wandcontactdoos geard  
⊕ : perilex aansluiting  
⊕ : onbedrade leiding  
⊕ : bedrade leiding  
⊕ : data

## ALGEMEEN

### Project

Villa's Seru Blenchi Bonaire

### Onderdeel

Begane grond

### Schaal

1:75

### Datum getekend

20 mei 2026

### Woningtype

Twee kapper

### Kavel

Kavel 59

### Formaat

A3 (297x420)

### Status

Definitief

### Model

A2





## LEGENDA

**MAATVOERING EN INRICHTING**  
De maten op de tekening zijn circa-maten. Deze zijn aangegeven in millimeters, tenzij anders vermeld. Bij de maatvoering tussen de wanden is geen rekening gehouden met enige wanddikking, zoals wandtegels en spuitwerk. Daarnaast kunnen zich tijdens de bouw veranderingen voordoen, die kunnen leiden tot maatverschillen. Op de tekening aangegeven meubilair en apparatuur dienen alleen ter oriëntatie.

## RENOVOOI PLATTEGRONDEN

- SYMBOLLEN**
- Meterkast
  - Buitenkraan
  - Hemelwaterdruiver
  - Buiten unit airco
  - Ruimte v.z.v. koeling d.m.v. airco
- ELEKTRA**
- : plafondlamp
  - : wandlamp
  - : wandlamp met timer
  - : schakelaar
  - : wisselstroomkabel
  - : serieschakelaar
  - : plafondventilator
  - : enkele wandcontactdoos geaard
  - : dubbele wandcontactdoos geaard
  - : perilex aansluiting
  - : onbedrade leiding
  - : bedrade leiding
  - : data

## ALGEMEEN

**Project**  
Villa's Seru Blenchi Bonaire

**Onderdeel**  
1e Verdieping

**Schaal**  
1:75

**Datum getekend**  
20 mei 2026

**Woningtype**  
Twee kapper

**Kavel**  
Kavel 59

**Formaat**  
A3 (297x420)

**Status**  
Definitief

**Model**  
A2

 SERU BLENCHI  
 RoosdomTijhuis  
BONAIRE

 eve  
ARCHITECTEN

## INTERIEURCONCEPT 1: Beach look – Bonaire Whiptail



Seru Blenchi

INTERIEURCONCEPT 2:

## Hout look Long Island – Geelvleugel Amazone



Serau Bianchi

INTERIEURCONCEPT 3:

## Cosmopolitan – Flamingo A1



Serau Bianchi





SERU BLENCHI



**FOR SALE**

**Your  
Caribbean  
Dream Home**



A development project by

**RoosdomTijhuis**  
**BONAIRE**

