



## **Seru Blenchi 42, Seru Blenchi**

**US\$ 512,000 Fixed price**

Exempt from transfer tax — only 1.5% buyer's costs

Seru Blenchi - 1,679 / 156 sq.ft./m2 - 4 Bedrooms - 2.5 Baths

## Real Estate information

Neighborhood	Seru Blenchi
Address	Seru Blenchi 42
Freehold Land	
Bedrooms	4
Bathrooms	2.5
New construction	
Air Conditioning in bedrooms	
Total living area	1,679 / 156 sq.ft./m2
Total ground area	5,952 / 553 sq.ft./m2
Maintenance status	New Construction



Ground tax (annually): 0.345% of the value (1st residence), or Property tax (annually): 0.91% of the value (2nd residence).



## Features

Seru Blenchi, a new development by [Roosdom Tjrhuis Bonaire](#), where rural charm, modern comfort, and the rich history of Bonaire come together. Nestled in a gently rolling, green, and historic setting, Seru Blenchi offers a serene living environment that perfectly reflects the island's peaceful and unspoiled character. A good life, beautifully local. Seru Blenchi is located right next to the highly sought-after neighborhoods of Bona Bista and Pure36.

The homes are being built in phases, using high-quality local and European materials, carefully selected for the Caribbean climate. Each residence has been passionately and proudly designed by [EVE architects](#).

Home 42 is a spacious semi-detached villa offering generous living space. With no less than four bedrooms, this home is ideal for families, remote workers, or those who love hosting relatives and friends. Three bedrooms come standard with air conditioning, with the option to extend this to the fourth bedroom and the living room for maximum comfort. You also have the opportunity to choose materials and finishes, three interior concepts have been created: Beach look, Long Island Wood look and Cosmopolitan look. Additionally, all optional upgrades are available, such as a carport, external storage room, or swimming pool, allowing the home to be fully customized to your preferences.

The home is delivered complete with a modern kitchen, stylish bathrooms, technical installations including hot water supply, WEB certification (water/electricity), and fully finished floors and walls. Inside, the walls are smoothly plastered and painted, so you can move in right away.

The garden is leveled and fully fenced, leaving plenty of room for you to shape the landscaping to your own taste and style. Optionally, a complete furnishing package is available through Wire Interiors Bonaire for a full turnkey experience. Curious about this package? Have a first look at the [online mood board](#).

Including a share in the joint access road.



## Technical specifications

- Construction method: solid prefab aerated concrete structure, suited to the Caribbean climate; extensions such as storage and carport/garage in concrete block.
- Roofing: pitched roofs with durable corrugated sheets in roof-tile profile (anthracite grey) and flat roofs with high-quality roofing.
- Floors: cement screed in a modern grey tone on the ground floor, ceramic tiles on the upper floor, and a finished concrete floor in the storage room.
- Facades: smoothly plastered and painted in carefully selected natural colors, harmonizing with the Bonairean surroundings.
- Frames and doors: aluminum profiles, powder-coated in grey tones, fitted with sun-reflective glass and insect screens on tilt-and-turn windows.
- Interiorconcept: choice of three concepts: Beach look, Long Island Wood look and Cosmopolitan look.
- Garden and fencing: garden leveled and fully enclosed with a traditional Bonairean wall at the front and natural fencing along the sides.

### Disclaimer:

- a. This project is still under development. The information and images (including the site plan) are indicative and no rights can be derived from them.
- b. The living area measurement is based on the net indoor space plus covered outdoor areas, such as, where applicable, a veranda, covered terrace, or external storage room. Not included are a wooden iroko carport and/or an uncovered sun terrace around the pool.

## Zoning details

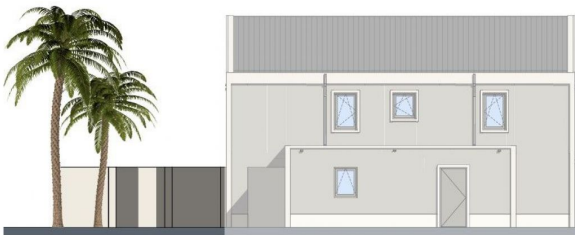
This villa is designated for residential use. Within the home, you are allowed to practice a profession or run a small business, provided this remains subordinate to the primary residential function. A maximum of 30% of the home or 50 m<sup>2</sup> (whichever is less) may be used for this purpose.

Rental is permitted, provided the rental period is longer than 3 months.

- Link to zoning map with marking: [Zoning map](#)
- Link to zoning description: Designation "[Residential I](#)" (only available in Dutch)



Achtergevel



Linkerzijgevel

## LEGENDA

### IMPRESSIES

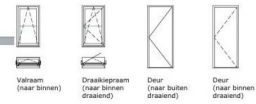
De tekeningen en afbeeldingen geven een impressie van het ontwerp. De werkelijke uitvoering en kleuren van gevelaanzichten, schilderwerk, dakbedekkingen etc. kunnen afwijken. Aan deze tekeningen kunnen, ondanks alle zorgvuldigheid die is nagestreefd, geen rechten worden ontleend.

### MAATVOERING EN INRICHTING

De maten op de tekening zijn circa-maten. Deze zijn aangegeven in millimeters, tenzij anders vermeld. Bij de maatvoering tussen de wanden is geen rekening gehouden met enige wandafwerking, zoals wandtegels en spuitwerk. Daarnaast kunnen zich tijdens de bouw veranderingen voordoen, die kunnen leiden tot maatverschillen. Op de tekening aangegeven meubilair en apparatuur dienen alleen ter oriëntatie.

## RENOVOI GEVELS

### SYMBOLEN



## ALGEMEEN

### Project

Villa's Seru Blenchi Bonaire

### Onderdeel

Achter- en linkerzijgevel

### Schaal

1:100

### Formaat

A3 (297x420)

### Datum getekend

20 mei 2026

### Status

Definitief

### Woningtype

Twee kapper

### Model

A2

### Kavel

Kavel 42



## LEGENDA

### MAATVOERING EN INRICHTING

De maten op de tekening zijn circa-maten. Deze zijn aangegeven in millimeters, tenzij anders vermeld. Bij de maatvoering tussen de wanden is geen rekening gehouden met enige wandafwerking, zoals wandtegels en spuitwerk. Daarnaast kunnen zich tijdens de bouw veranderingen voordoen, die kunnen leiden tot maatverschillen. Op de tekening aangegeven meubilair en apparatuur dienen alleen ter oriëntatie.

## RENOVOI PLATTEGRONDEN

### SYMBOLEN

  Meterkast  
  hwa Hemelwaterafvoer  
  Ruimte v.z.v. koeling d.m.v. airco  
  bk Buitenkrans  
  Buiten unit airco

### ELEKTRA

  : plafondlamp  
  : wandlamp  
  : wandlamp met timer  
  : schakelaar  
  : wisselschakelaar  
  : serieelchakelaar  
  : plafondventilator  
  : enkele wandcontactdoos geaard  
  : dubbele wandcontactdoos geaard  
  : serieel aansluiting  
  : onbedrade leiding  
  : bedrade leiding  
  : data

## ALGEMEEN

### Project

Villa's Seru Blenchi Bonaire

### Onderdeel

Begane grond

### Schaal

1:75

### Formaat

A3 (297x420)

### Datum getekend

20 mei 2026

### Status

Definitief

### Woningtype

Twee kapper

### Model

A2

### Kavel

Kavel 42





**LEGENDA**

**MAATVOERING EN INRICHTING**

De maten op de tekening zijn circa-maten. Deze zijn aangegeven in millimeters, tenzij anders vermeld. Bij de maatvoering tussen de wanden is geen rekening gehouden met enige wanddikte, zoals wanddopels en spuitwerk. Daarnaast kunnen zich tijdens de bouw veranderingen voordoen, die kunnen leiden tot maatverschillen. Op de tekening aangegeven meubilair en apparatuur dienen alleen ter oriëntatie.

**RENVOOI PLATTEGRONDEN**

**SYMBOLEN**

- Meterkast
- Huisaansluiting
- Ruimte v.z.v. koeling d.n.v. airco
- Buitenkraan
- Buiten unit airco

**ELECTRA**

- : plafondlamp
- : wandlamp
- : wandlamp met timer
- : schakelaar
- : wiandstakelaar
- : seriechakelaar
- : plafondventilator
- : enkele wandcontactdoos geaard
- : dubbele wandcontactdoos geaard
- : perlex aansluiting
- : onbedrade leiding
- : bedrade leiding
- : data

**ALGEMEEN**

**Project**  
Villa's Seru Blenchi Bonaire

**Onderdeel**  
1e Verdieping

**Schaal**  
1:75

**Datum getekend**  
20 mei 2026

**Woningtype**  
Twee kapper

**Kavel**  
Kavel 42

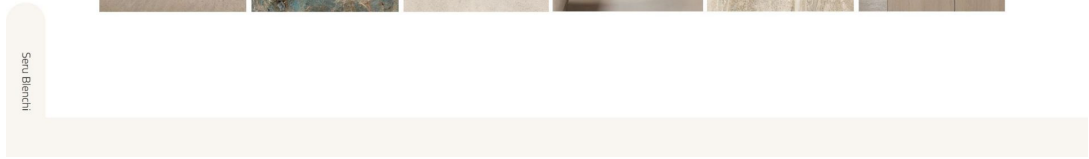
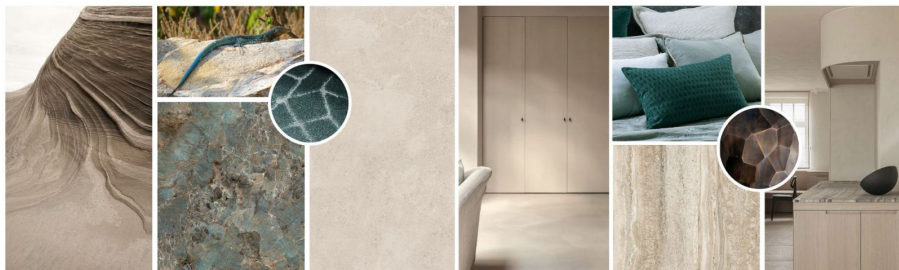
**Formaat**  
A3 (297x420)

**Status**  
Definitief

**Model**  
A2



INTERIEURCONCEPT 1:  
**Beach look – Bonaire Whiptail**



INTERIEURCONCEPT 2:

## Hout look Long Island – Geelvleugel Amazone



Serau Bianchi

INTERIEURCONCEPT 3:

## Cosmopolitan – Flamingo A1



Serau Bianchi





SERU BLENCHI



**FOR SALE**

**Your  
Caribbean  
Dream Home**



A development project by

**RoosdomTijhuis**  
BONAIRE

