



La Palma 48, La Palma

US\$ 695,000 Asking price

SOLD

Buyers Costs

La Palma - 1,733 / 161 sq.ft./m2 - 3 Bedrooms - 2.5 Baths - Swimming Pool

Real Estate information

Neighborhood	La Palma
Address	La Palma 48
Freehold Land	
Bedrooms	3
Bathrooms	2.5
Parking	
Swimming Pool	
Air Conditioning in bedrooms	
Total living area	1,733 / 161 sq.ft./m2
Total ground area	10,624 / 987 sq.ft./m2
Maintenance status	good



Ground tax (annually): 0.345% of the value (1st residence), or Property tax (annually): 0.91% of the value (2nd residence). Buyers Costs consist of (one-off): 5% transfer tax, approx. 1.5% notary costs and costs of Land Registry at the office of Kadaster depending on purchase price.

Registered at the Land Registry Office Kadaster, number 4-H-491.



Features

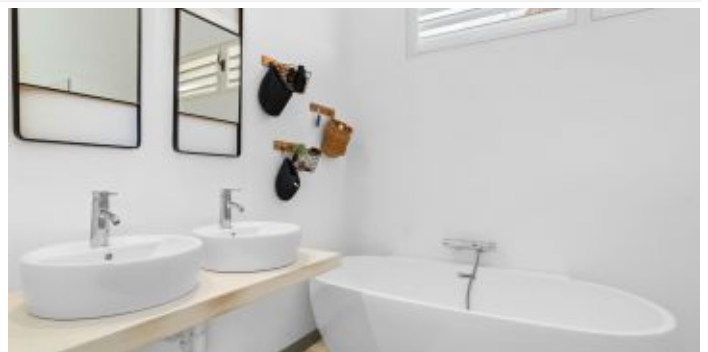
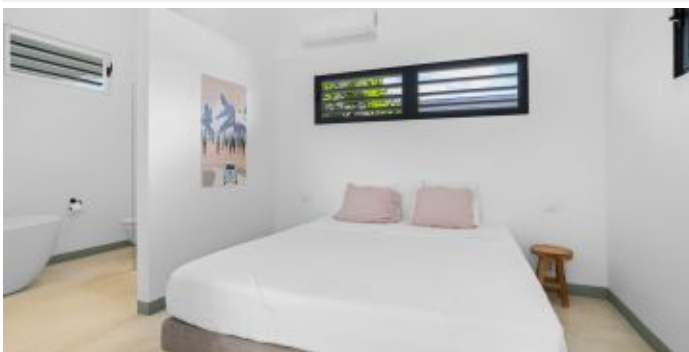
This beautiful detached villa is for sale in the quiet residential area of La Palma. This modern home offers a combination of style, comfort, and luxury, ideal for both permanent living and long-term rental.

Upon entering, you are welcomed into a spacious and light living room with an open kitchen, equipped with modern built-in appliances. The villa features three comfortable bedrooms and two elegantly finished bathrooms. At the rear of the house, there is a large covered terrace where you can peacefully enjoy the Caribbean outdoor lifestyle. The beautifully landscaped backyard offers a stunning private pool and an additional covered area, perfect for a lounge corner.

This villa is located in a quiet area, yet just a short distance from all essential amenities and the most beautiful beaches of Bonaire. If you are looking for a home that combines space, luxury, and the ultimate island feel, contact us for more information or to schedule a viewing.

- beautiful location in the popular La Palma neighborhood,
- living room with an adjoining covered porch,
- wooden roof construction with roof tiles,
- concrete floors throughout the house and covered terrace,
- hardwood and aluminium window frames,
- fully landscaped garden with various plants, (palm)trees, shaded palapa, and finished with white gravel.

Automatic membership of HOA (dormant). Additional aesthetics provisions apply within the La Palma allotment project.



Lay out

Entrance via living room with open concept kitchen, sliding doors to covered back porch, master bedroom with private bathroom, second bedroom, second bathroom, 3rd bedroom and storage

Technical specifications

- 110 and 220 volt,
- air conditioning in all bedrooms,
- drip system,
- fiber internet connection,
- magna swimming pool- pump and filter installation.

Zoning plan

Extract from Ruimtelijk Ontwikkelingsplan Bonaire (zoning plan)

Link to zoning plan map with marker: [Map](#)

Link to zoning description: [Zoning "Woongebied II"](#)











