



Kaya Irlanda 8, Kralendijk

US\$ 2,600,000 Asking price

Buyers Costs

Kralendijk - 12 Bedrooms - 12 Baths

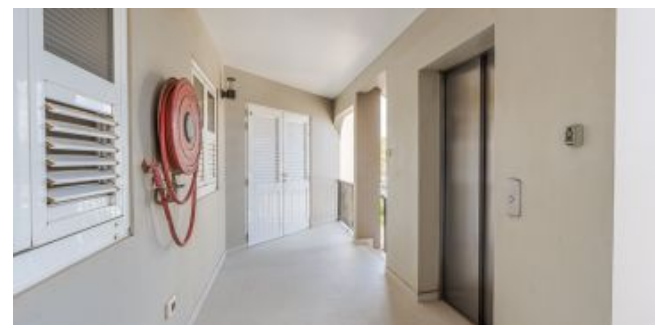
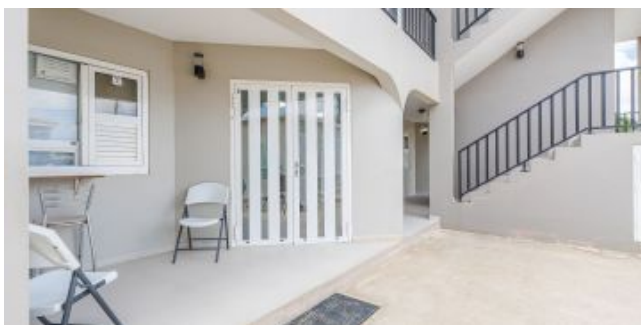
Real Estate information

Neighborhood	Kralendijk
Address	Kaya Irlanda 8
Long Lease Land	
Bedrooms	12
Bathrooms	12
Holiday Rentals allowed	
Parking	
Air Conditioning in bedrooms	
Total ground area	6,372 / 592 sq.ft./m2
Maintenance status	good



Ground tax (annually): 0.345% of the value (1st residence), or Property tax (annually): 0.91% of the value (2nd residence). Buyers Costs consist of (one-off): 5% transfer tax, approx. 1,5% notary costs and costs of Land Registry at the office of Kadaster depending on purchase price.

Registered at the Land Registry Office Kadaster, number 4-F-731. Long lease until 21st of April 2069.



Features

Located in the central area of Kralendijk and a stone's throw from the boulevard, various dining options, shops and the Caribbean Sea, you will find this unique apartment complex. A perfect location where everything is within easy reach.

With a total of six spacious apartments, this complex offers a rare opportunity for investors looking for an ideal combination of location, comfort and versatility. Each apartment has two bedrooms, two bathrooms, a private balcony and a parking space. What makes this complex apart is its multifunctionality. In addition to providing spacious living space, the apartments also offer the opportunity to be rented out as office spaces, making them a valuable investment for entrepreneurs seeking a strategic location in the bustling center of Kralendijk.

The various units can also be used as office units. A third option is to split the building and sell the units separately. If you are looking for an investment opportunity with potential returns, look no further! This apartment complex offers everything you need and more.

- within walking distance of the center of Kralendijk and the Caribbean Sea,
- complex consisting of 6 spacious apartments,
- apartments consist of a living room, kitchen, 2 bedrooms, 2 bathrooms and a balcony,
- good long/short term rental possibilities and very suitable as office spaces,
- parking on private grounds,
- roof with ceramic roof tiles,
- ceramic floor tiles throughout the entire complex.



Lay out

The apartment complex consists of 6 apartments, with two apartments on each floor with a stairwell in the middle that provides access to the upper floors of the complex. There is also a private parking space for all residents and customers of the building.

Technical specifications

- 110 and 220 Volt,
- air conditioning in all bedrooms.

Zoning plan

Extract from Ruimtelijk Ontwikkelingsplan Bonaire (zoning plan)

Link to zoning plan map with marker: [Map](#)

Link to zoning description: [Zoning "Mixed - I"](#)

Plots designated as 'Mixed - I' are intended for hotels, restaurants, recreational homes, leisure apartments, residential properties, sports facilities, and office buildings.

